

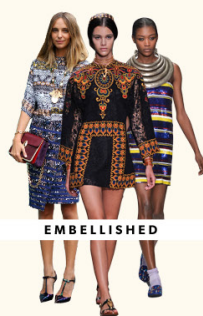
SS14

CATWALK ROUND-UP



FROM THE RUNWAYS OF NEW YORK AND MILAN TO THE STREETS OF LONDON AND PARIS, THIS IS OUR EDIT OF THE KEY TRENDS THAT ARE SET TO DOMINATE SS14.

Love
Camilla & Corin
TEAM NEW LOOK



BACK

SS14

CATWALK ROUND-UP

ART & GEOMETRIC

FROM VIBRANT PORTRAITS TO BOLD ABSTRACT BRUSH STROKES, PRINT IS TAKING A TURN FOR THE PAINTERLY. OVERSIZED POLKA DOTS CLASH WILDLY AGAINST MONOCHROME STRIPES ON SLIM CUT SILHOUETTES, AS HUMAN FACES ARE BRASHLY BRANDED IN VIVID PRIMARY COLOURS ACROSS COATS AND SHIFT DRESSES. BACKSTAGE, EYES WERE SPATTERED IN VIVID BLUE, GREEN, PINK AND SILVER PAINTS, AS IF USED TO CLEAN AN ARTIST'S BRUSH. TRANSLATE THE TREND WITH SUPERSIZE DETAILS AND COLOUR BLOCK SHADES.



£9.99



£19.99



£19.99



£9.99

BACK

SS14

CATWALK ROUND-UP

EMBELLISHED

FROM ALL OVER CLUSTERED SEQUINS TO A TEASING CENTRE PIECE THAT TRANSFORMS AN ENTIRE LOOK, EMBELLISHMENT AS A THEME IS SET TO CAST A GLITTERING LIGHT OVER THE COMING SEASON. AS FAR AS GUCCI AND PRADA WERE CONCERNED, THE PHRASE 'LESS IS MORE' WENT COMPLETELY OUT THE WINDOW. THE MESSAGE BEING THAT MAKING A STATEMENT COMES IN THE FORM OF SIGNATURE NECKLACES, AS WELL AS HEAD-TO-TOE BEADING AND JEWELS.



£19.99



£24.99



£24.99



£14.99

BACK

SS14

CATWALK ROUND-UP

LADYLIKE SPORTS

LEAVING THE ATHLETIC TONE OF PREVIOUS SEASONS BEHIND, THIS SPRING'S SPORTS OBSESSION IS SET TO HAVE AN OVERLY FEMININE FEEL. CONTRASTING CLASSICALLY BOYISH SWEATERS AND BOMBER JACKETS WITH BLUSH SHADES AND A-LINE SILHOUETTES WILL BE PIVOTAL TO ACHIEVING THE SOPHISTICATED, LADYLIKE EDGE THAT DOMINATED THE CATWALK AT BOTH MULBERRY AND ERDEM. ON THE STREET, BOLD SLOGANS AND LOOSE, OVERSIZE JACKETS DRAPED THE SHOULDERS OF NEUTRAL KNITS AND SKATER STYLES WHILST PANELLED TRAINERS GAVE POLISHED DESIGNS AN URBAN FEEL.

JIL SANDER

MULBERRY

CHRISTOPHER KANE

MULBERRY

PAUL & JOE

MAX MARA



£14.99



£12.99



£14.99



£22.99

BACK

SS14

CATWALK ROUND-UP

MONOCHROME TAILORING

WHERE AS MONOCHROME TAILORING TENDS TO FEATURE SHARP SEPARATES AND CLASSICALLY BOYISH SILHOUETTES, THIS SEASON SAW THE TIMELESS TREND EVOLVE INTO SOMETHING MUCH MORE FEMININE YET WITH A TOMBOY FEEL. ISABEL MARANT TAUGHT THE ART OF A TAILORED APPROACH MIXED WITH SOFT FRILLS AND FIERCE LEATHER, JUXTAPOSING THE TWO BEAUTIFULLY. SAINT LAURENT KEPT A STRONG ELEMENT OF MASCULINITY, WITH THE CLASSIC TUXEDO TAKING CENTRE STAGE. TWO-PIECES WERE A KEY THEME, WITH THE MIX AND MATCH POSSIBILITIES ENDLESS.

PRABAL GURUNG



SAINT LAURENT



VICTORIA BECKHAM



SAINT LAURENT



ISABEL MARANT



£17.99



£19.99



£14.99



£14.99

BACK

SS14

CATWALK ROUND-UP

PASTELS

WITH A DELICIOUS ICE CREAM COLOUR PALETTE, A SPRINKLE OF ICED SHEERS AND A SWIRL OF DELICATE FROSTED LACE, SOFT PASTEL HUES WERE PRESENT ACROSS SEVERAL OF THE KEY FASHION HOUSES FOR SPRING. FROM GENTLE ACCENTS ON THE STREET TO BURBERRY'S OVERTLY FEMININE DRESSES AND SEPARATES, EVERYWHERE YOU LOOKED WERE SHADES OF MINT, BLUSH LILAC, SORBET YELLOW AND POWDER BLUE. SLEEK SATIN AND SHEER FABRICS GAVE A FRESH, SOPHISTICATED FEEL TO THESE CHILDHOOD SHADES WHILST BRINGING A SOFTER EDGE TO HEAVIER KNITS AND TAILORING.

BORA AKSU

BORA AKSU

VERSACE

MATTHEW WILLIAMSON



£24.99



£12.99



£19.99



£22.99

BACK

SS14

CATWALK ROUND-UP

OVERSIZED

FROM CLUTCHES TO COATS, SHIFT DRESSES TO JUMPERS, EVERYONE'S EYES ARE ON THE OVERSIZED VARIETY FOR THE COMING SEASON. THIS WAS A PARTICULARLY BIG TREND ON THE STREETS OF MILAN, WITH BLOGGERS, CELEBRITIES AND MODELS COMBINING BOYFRIEND STYLE BLAZERS WITH WIDE LEG SUIT TROUSERS. THIS TREND SITS WELL WITH BOTH SMART AND CASUAL STYLES. THE 'BORROWED FROM YOUR BOYFRIEND' LOOK LENDS ITSELF TO THE ON-GOING GRUNGE TREND, WHILST TRAPEZE STYLE SHIFT DRESSES AND BILLOWING SKIRTS WORK WELL FOR THE EVENING.



£64.99



£24.99



£22.99



£24.99

BACK

SS14

CATWALK ROUND-UP

PINK

WHATEVER THE SHADE, WHATEVER THE GARMENT, THERE IS NO ESCAPING IT - PINK IS BY FAR THE COLOUR OF THE MOMENT. MANY DESIGNS, INCLUDING BURBERRY, PAID HOMAGE TO THE TRADITIONAL PERCEPTION OF THE COLOUR AND SHOWCASED ALL THINGS FEMININE. FROM FLORAL LACE, TO SPARKLING EMBELLISHMENTS, THE COLLECTION PLACED PINK EXACTLY WHERE YOU'D EXPECT IT TO BE, AS DID THAT OF BORA AKSU. OTHERS SAW PINK IN A SPORTIER LIGHT, WHILST KNITWEAR FEATURED HEAVILY IN TERMS OF STREET STYLE.



£24.99



£17.99



£14.99



£17.99

BACK

SS14

CATWALK ROUND-UP

PRIMARY

INTENSELY VIBRANT AND UNDENIABLY HIGH IMPACT, PRIMARY SHADES OF RED, YELLOW AND BLUE DOMINATED THE RUNWAYS ACROSS DRAMATIC EVENING DRESSES, DAYTIME SHEERS AND TAILORED SEPARATES. ELECTRIC BLUE CRACKLED ON THE CATWALK OF EMANUEL UNGARO WHILST, ELSEWHERE, INTENSE SHADES OF COLOUR POP RED SHINED BRIGHTLY. PLAYING BOLDLY WITH PAINTBOX BRIGHTS, SUNSHINE YELLOW ADORNED DELICATE, FLOORLENGTH DESIGNS AND MODERN MINIS TO COMPLETE THE TRICOLOUR THAT'S SET TO OWN THE COMING SEASON. .



£8.99



£22.99



£14.99



£14.99